



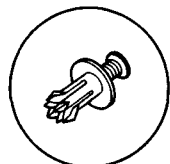
Side Sill Panels/Side Sill Moldings

Replacement

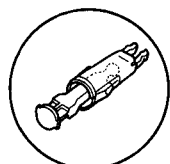
Disassemble in the numbered sequence.

NOTE: When removing the clips, loosen the screw, then remove the clips with a clip remover.

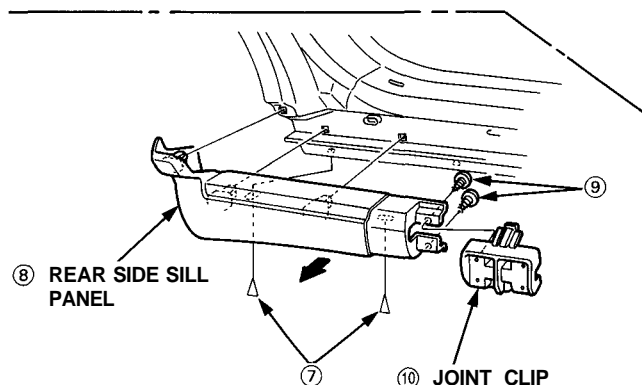
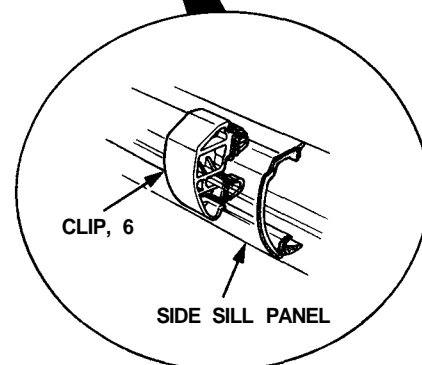
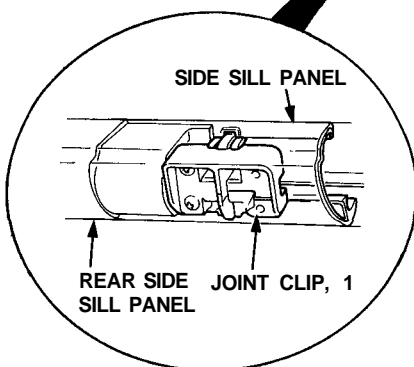
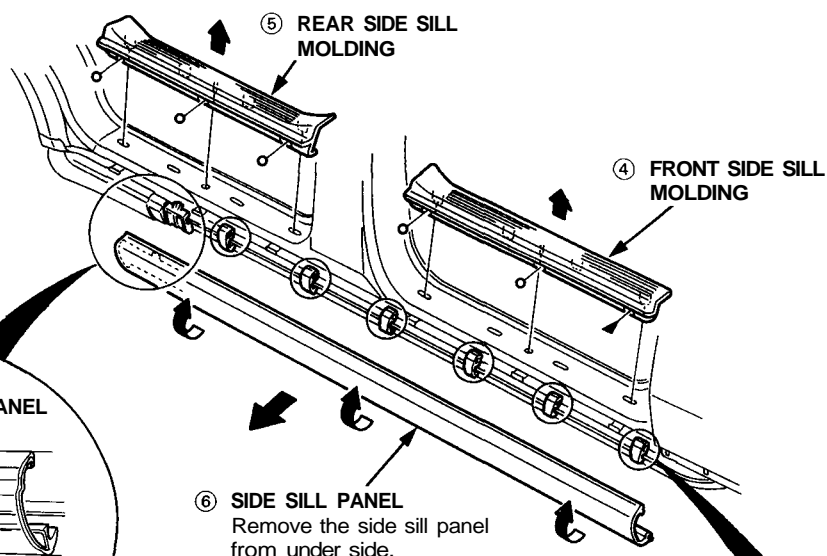
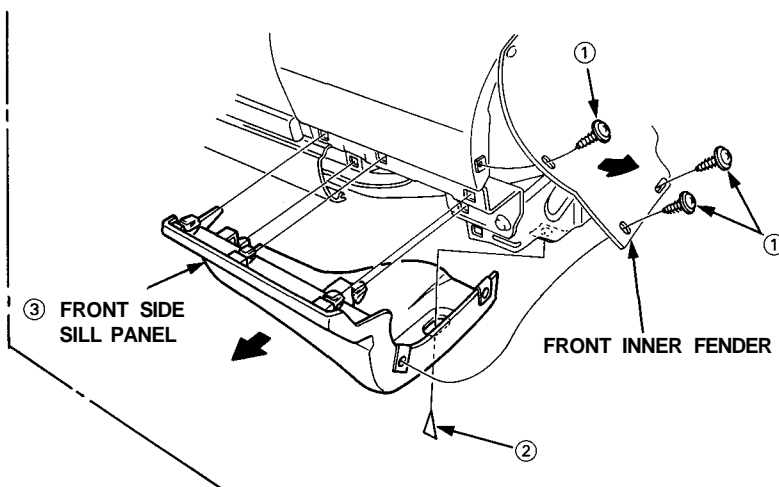
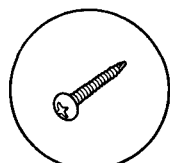
▷: Clip locations, 3



▶: Clip location, 1



○: Screw locations, 5



Installation is the reverse of the removal procedure.

NOTE:

- Take care not to twist the side sill panel.
- If necessary, replace any damaged clips.